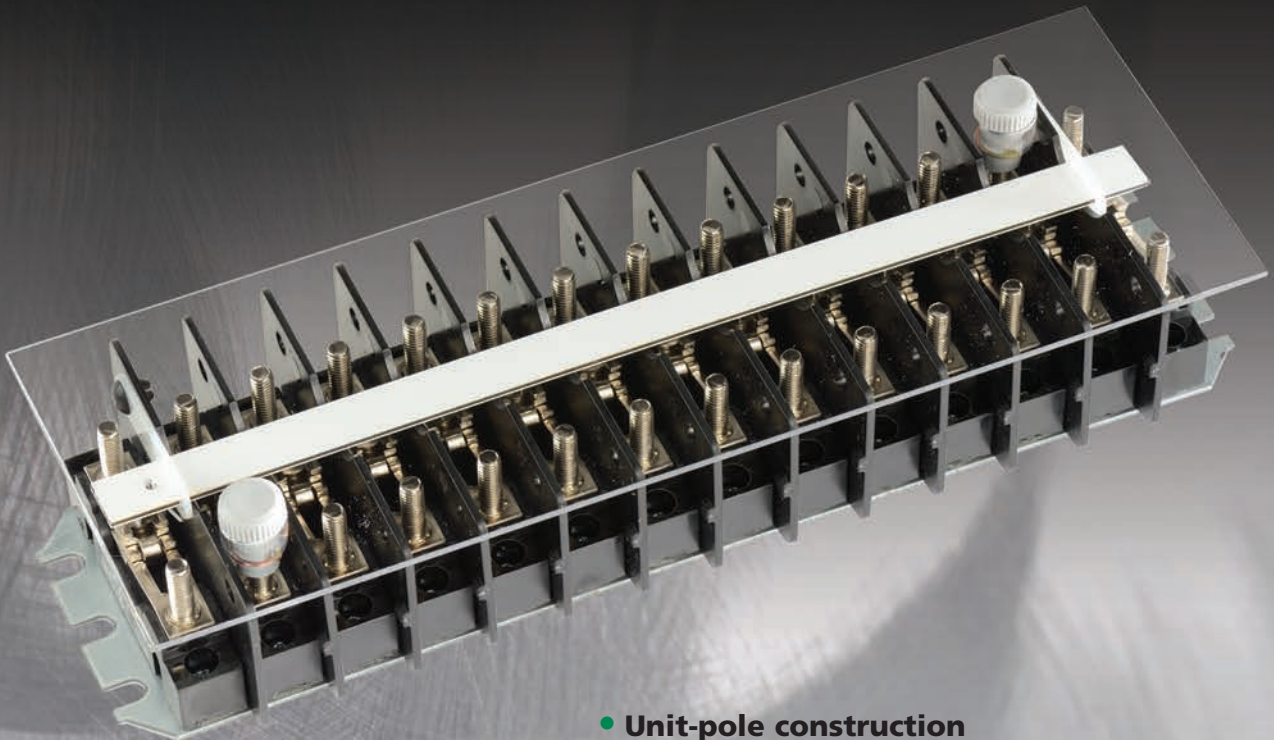


Terminal Blocks

Types NT and ZWM



- Unit-pole construction
- Sliding link to permit testing without disturbing wiring
- High barriers that prevent shorting between poles
- Class 1E qualified per IEEE (Type ZWM only)
- Recognized by UL and cUL

STATES[®]

Recognized by UL and cUL

Underwriters Laboratories Inc. recognizes STATES Type NT and Type ZWM Terminal Blocks under its component program, File No. E147470, with a rating of 600 volts, 30 amperes.

Class 1E Qualified Per IEEE Standard 323-1974

Type ZWM Terminal Blocks have successfully completed a generic test program that meets the requirements of most nuclear power plants for Class 1E applications outside of containment. Extensive, accelerated-life testing was conducted by an outside, independent firm and utilized thermal aging, mechanical aging, environmental extremes, radiation exposure and seismic simulation. The service conditions and parameters of the test program included:

41-year life at 131° F (55° C), 600 operations, 95% humidity, 2.2×10^8 rads of radiation and 10g maximum acceleration seismic level.



Side view of closed sliding link block



Pictured is Part No. M-25012 – NT 12 pole sliding link with a white marker strip, shown in the up position.

DESCRIPTION

Featuring a unique “sliding link” disconnect, STATES Type NT and Type ZWM Terminal Blocks function as inexpensive switches to simplify system checkout. Easily and quickly operated, the sliding link provides a means of opening the circuit without removing any wiring. Utilizing unit-pole construction, these terminal blocks are available with up to 73 poles on a single base.

APPLICATIONS

The popular STATES Types NT and Type ZWM Terminal Blocks are widely acclaimed for their unique disconnect feature. Designed to provide a junction between switchboard wiring and cable wires, it replaces the standard stud and straight-strap type of connection with a sliding-link connection.

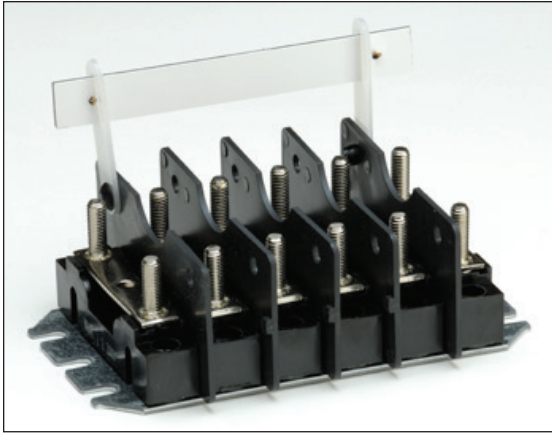
The sliding link provides the means for inserting an indicating instrument or artificial load into the circuit without removing any wiring. These terminal blocks greatly simplify system checkout by the test technician and eliminate the possibility of error in reconnection.

FEATURES AND BENEFITS

- **Sliding link:** Link quickly opens and closes the circuit to permit testing without disturbing any wiring.
- **Unit-pole construction:** Up to 73 poles available
- **Space-saving:** Only 0.625 of an inch (15 mm) center-to-center is used between poles.
- **Operator safety:** The high barrier between poles increases circuit isolation.
- **UL recognized:** Terminal blocks are rated for 600 volts, 30 amperes (50 amperes for 250 Series Sliding Link only).
- **Fuse holders:** 250- or 600-volt fuse holders are available if circuits must be fused.
- **Marker strips or tags:** Strips or tags are available to make coding of each circuit fast and easy.
- **Connections:** Blocks are available in front-connected styles.
- **Contacts:** Heavy, nickel-plated, brass contacts are used.
- **Covers:** Black or Clear covers are available.

Straight Strap

When the disconnect feature of the sliding link is not required, the blocks can be provided with a straight-strap connection. These blocks have the same construction and dimensions as the sliding link blocks. Poles with straight-strap connection can be combined on the same block with poles having sliding links or fuse holders.



Straight strap block with white marker strip

Shorting-type Terminal Block

Current shorting-type terminal blocks are available in one section, with up to 24 poles. Shorting pins are provided at each pole. There is one blank pole added to each block. The blank pole has provisions for two shorting pins to be stored if not in use. For panel layout, use the dimensions of the regular 10-pole shorting block with marker strip; the 11-pole dimensions would be used to lay out mounting holes.



Shorting-type block with white marker strip

Suffix

G: Current transformer shorting type block, use with 251 straight strap series only (25100-G).

Note

In special applications where flame-retardant properties are desired, STATES Terminal Blocks can be provided with self-extinguishing barriers and marker strips. Use ZWM prefix.

Terminal Blocks with Fuse Protection

Should fused protection be required, specify fuse holders by Part No. 6996 for 250-volt fuse holders or Part No. 6995 for 600-volt fuse holders (fuses not included). Also, counting left to right, specify at which position on the terminal block the fuse holders are to be installed.

Fuse Size

Part No. 6996 accepts standard cartridge fuses rated 250 VAC 30 AMP. Fuse dimensions must be $\frac{1}{4}$ " diameter and $1\frac{1}{4}$ " in length.

Part No. 6995 accepts standard cartridge fuses rated 600 VAC 30 AMP. Fuse dimensions must be $\frac{3}{8}$ " diameter and $1\frac{1}{2}$ " in length.



Part No. 6996 - 250 volt fuse holder



Part No. 6995 - 600 volt fuse holder

COVERS

Covers, clear or black, are available in either knobbed or hinged styles.

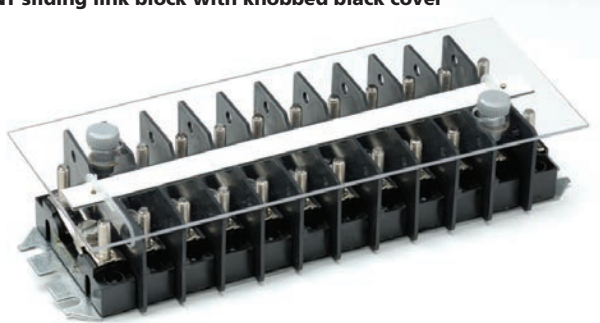
The black cover is made of laminate and the clear cover of lexan. Both cover types are made from flame retardant materials.

The knobbed covers are fastened to two pole studs by captive, insulated knobs.

The hinged covers are attached with swing arms.



NT sliding link block with knobbed black cover

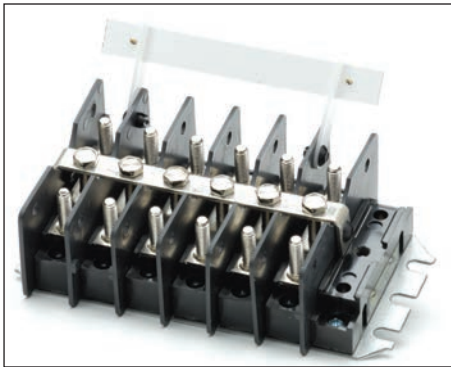


NT sliding link block with knobbed clear cover

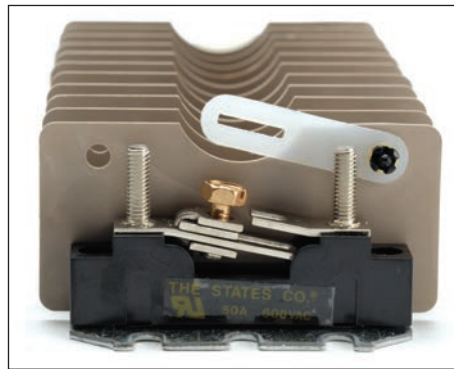


CH-25012 - NT 12 pole sliding link with clear hinged cover

TERMINAL BLOCKS



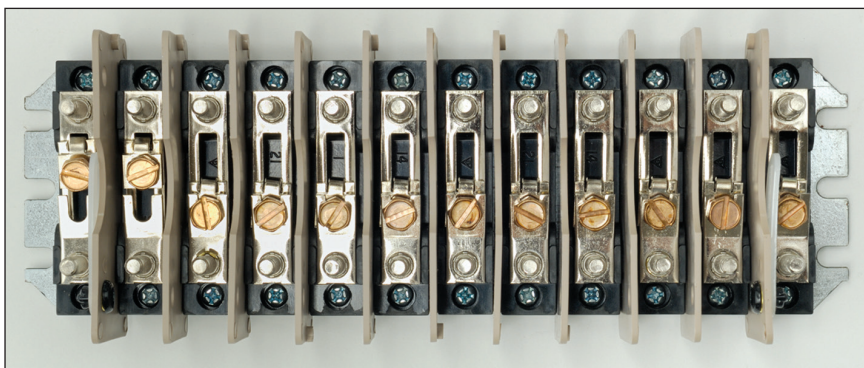
Shorting Type Block with white marker strip



Side view of 'open' link



White marker strip showing examples of custom engraving styles



ZWM Sliding Link Terminal Block with first two links in 'open' position

SPECIFICATIONS

NT TERMINAL BLOCKS TECHNICAL SPECIFICATIONS			
Class	250	251	251xx-G
Brief Description	Sliding Link Terminal Block	Straight Strap Terminal Block	Shorting Type Terminal Block
Certifications	UL, cUL UL File E147470	UL, cUL UL File E147470	UL, cUL UL File E147470
Voltage Rating	600VAC	600VAC	600VAC
Current Rating	50A	30A	30A
Recommended Wire Size Range	Min 14awg / Max 10awg	Min 14awg / Max 10awg	Min 14awg / Max 10awg
Recommended Wire Lug Size	#10	#10	#10
Stud Thread	10-32	10-32	10-32
Recommended Torque for Stud Wiring Connections	Max 25in/lbs	Max 25in/lbs	Max 25in/lbs
6996 - Fuse Clip Dimensions - 250 VAC 30 AMP *Fuse not included	1/4" Diameter 1 1/4" Length	1/4" Diameter 1 1/4" Length	1/4" Diameter 1 1/4" Length
6995 - Fuse Clip Dimensions - 600 VAC 30 AMP *Fuse not included	13/32" Diameter 1 1/2" Length	13/32" Diameter 1 1/2" Length	13/32" Diameter 1 1/2" Length
Ambient Temperature	158° F (70° C)	158° F (70° C)	158° F (70° C)

ZWM TERMINAL BLOCKS TECHNICAL SPECIFICATIONS			
Class	ZWM-250	ZWM-251	ZWM-251xx-G
Brief Description	Nuclear Rated Sliding Link Terminal Block	Nuclear Rated Straight Strap Terminal Block	Nuclear Rated Shorting Type Terminal Block
Certifications	UL, cUL UL File E147470 IEEE 323-1974/83 - IEEE 323-1975/87	UL, cUL UL File E147470 IEEE 323-1974/83 - IEEE 323-1975/87	UL, cUL UL File E147470 IEEE 323-1974/83 - IEEE 323-1975/87
Voltage Rating	600VAC	600VAC	600VAC
Current Rating	50A	30A	30A
Recommended Wire Size Range	Min 14awg / Max 10awg	Min 14awg / Max 10awg	Min 14awg / Max 10awg
Recommended Wire Lug Size	#10	#10	#10
Stud Thread	10-32	10-32	10-32
Recommended Torque for Stud Wiring Connections	Max 25in/lbs	Max 25in/lbs	Max 25in/lbs
6996 - Fuse Clip Dimensions - 250 VAC 30 AMP *Fuse not included	1/4" Diameter 1 1/4" Length	1/4" Diameter 1 1/4" Length	1/4" Diameter 1 1/4" Length
6995 - Fuse Clip Dimensions - 600 VAC 30 AMP *Fuse not included	13/32" Diameter 1 1/2" Length	13/32" Diameter 1 1/2" Length	13/32" Diameter 1 1/2" Length
Ambient Temperature	284° F (140° C)	284° F (140° C)	284° F (140° C)

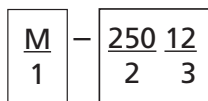
The Recommended Torque Value for the Linking Screw on BOTH the NT and ZWM Sliding Link Terminal Blocks is Max 18in/lbs

STATES TYPE NT/ZWM TERMINAL BLOCKS

Understanding NT Terminal Block Part Numbers					
	1	2	3	4 (optional)	5 (optional)
Block Type	Options (Options can be singular, combined or none selected)	Block Type	Number of Poles (Please use 2 digits)	Mixed Use	Number of Poles
NT	C = Clear Knob Cover B = Black Knob Cover CH = Clear Hinged Cover BH = Black Hinged Cover M = White Marker Strip K = Black Marker Strip SM = White Marker Tags FM = Red Marker Tags EM = Engraved White Marker Strip EK = Engraved Black Marker Strip	250 = Sliding Link 251 = Straight Strap *The NT 250 series uses an 8-32 stainless steel screw for the sliding link disconnect	01 - 73 *See notes on page 10 regarding extra mounting support on blocks over 25 poles	S = Combination of Sliding Link or Straight Strap w/ 250v Fuse Holder B = Combination of Sliding Link or Straight Strap w/ 600v Fuse Holder	1 - 73 G = Shorting Block The shorting option can only be used on the 251 series block *Typically 24 is the highest number of poles on a shorting block

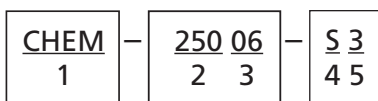
Understanding ZWM Terminal Block Part Numbers					
	1	2	3	4 (optional)	5 (optional)
Block Type	Options (Options can be singular, combined or none selected)	Block Type	Number of Poles (Please use 2 digits)	Mixed Use	Number of Poles
ZWM	CZWM = Clear Knob Cover BZWM = Black Knob Cover CHZWM = Clear Hinged Cover BHZWM = Black Hinged Cover ZWM = White Marker Strip ZWK = Black Marker Strip ZWSM = White Marker Tags ZWFM = Red Marker Tags EZWM = Engraved White Marker Strip EZWK = Engraved Black Marker Strip	250 = Sliding Link 251 = Straight Strap *The ZWM 250 series uses an 8-32 everdur bronze screw for the sliding link disconnect	01 - 73 *See notes on page 10 regarding extra mounting support on blocks over 25 poles	S = Combination of Sliding Link or Straight Strap w/250v Fuse Holder B = Combination of Sliding Link or Straight Strap w/ 600v Fuse Holder	1 - 73 G = Shorting Block The shorting option can only be used on the 251 series block *Typically 24 is the highest number of poles on a shorting block

EXAMPLES



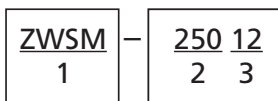
Part No. M-25012

NT 12 Pole Block - 12 sliding links with white marker strip.



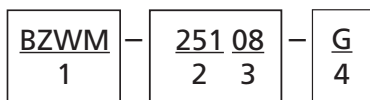
Part No. CHEM-25006-S3

NT 6 Pole Block - Combination Block - 3 sliding links & 3 250v fuse holders with clear hinged cover and engraved white marker strip (customer must provide fuse holder positions at order placement).



Part No. ZWSM-25012

ZWM 12 Pole Block - 12 sliding links with white marker tags.

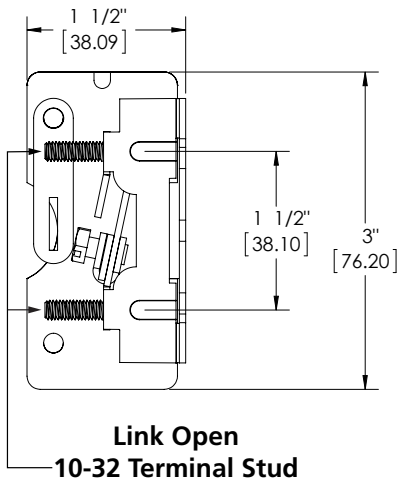
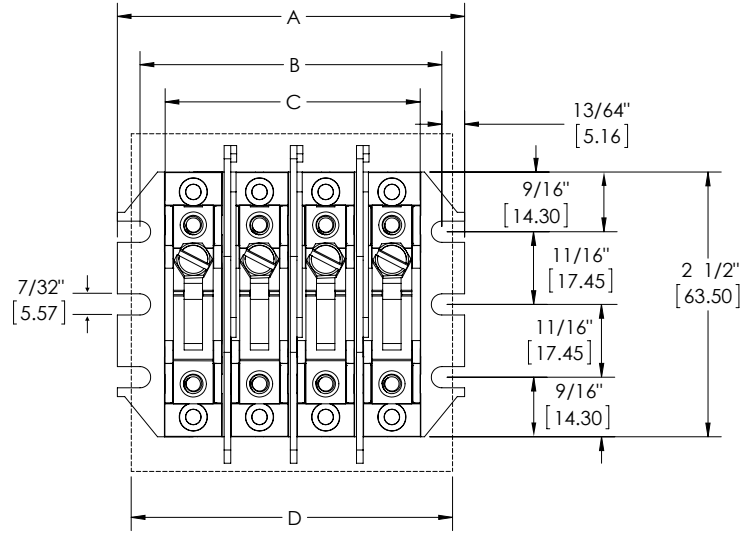
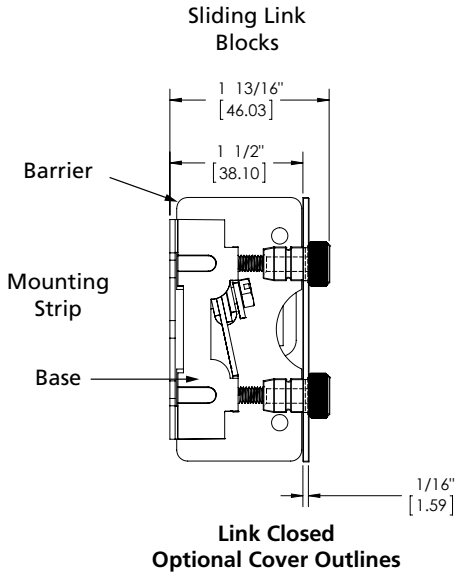


Part No. BZWM-25108-G

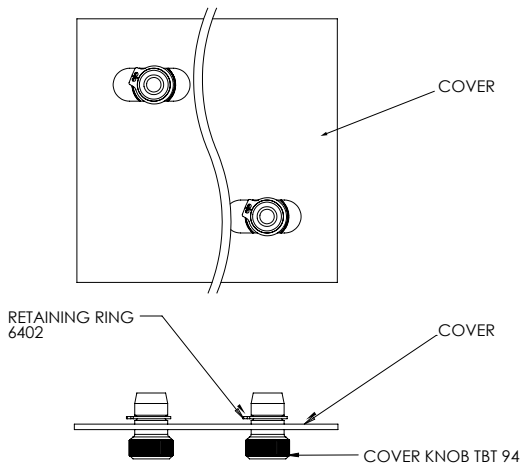
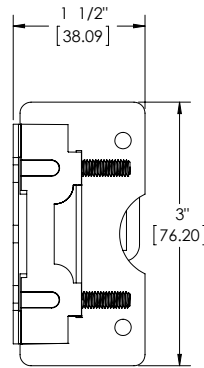
ZWM 8 Pole Block - 8 shorting with black knob cover and white marker strip.

Special custom orders may be subject to order minimums

DIMENSIONS IN INCHES [MM]



Straight-Strap Blocks



Notes:

- Both the sliding link and straight strap types have same dimensions.
- To provide extra mounting support, at 26 poles, one blank space is added; at 51 poles, two blank spaces are added.
(Example - use the 31 pole mounting dimensions for a 30 pole sliding link or straight strap block)
- Shorting Blocks, 1 extra pole provided for shorting pin storage.
(Example - use the 7 pole mounting dimensions for a 6 pole shorting block)

See DIMENSIONS on page 9

DIMENSIONS

NO. OF POLES	A			B			C			D (COVER LENGTH)		
	FRACTIONS	DECIMAL	MM	FRACTIONS	DECIMAL	MM	FRACTIONS	DECIMAL	MM	FRACTIONS	DECIMAL	MM
1	1 3/8	1.38	34.93	31/32	0.97	24.61	35/64	0.55	13.89	-	-	-
2	2	2.00	50.80	1 19/32	1.59	40.48	1 11/64	1.17	29.77	1 3/4	1.75	44.45
3	2 5/8	2.63	66.68	2 7/32	2.22	56.36	1 51/64	1.80	45.64	2 3/8	2.38	60.33
4	3 1/4	3.25	82.55	2 27/32	2.84	72.23	2 27/64	2.42	61.52	3	3.00	76.20
5	3 7/8	3.88	98.43	3 15/32	3.47	88.11	3 3/64	3.05	77.39	3 5/8	3.63	92.08
6	4 1/2	4.50	114.30	4 3/32	4.09	103.98	3 43/64	3.67	93.27	4 1/4	4.25	107.95
7	5 1/8	5.13	130.18	4 23/32	4.72	119.86	4 19/64	4.30	109.14	4 7/8	4.88	123.83
8	5 3/4	5.75	146.05	5 11/32	5.34	135.73	4 59/64	4.92	125.02	5 1/2	5.50	139.70
9	6 3/8	6.38	161.93	5 31/32	5.97	151.61	5 35/64	5.55	140.89	6 1/8	6.13	155.58
10	7	7.00	177.80	6 19/32	6.59	167.48	6 11/64	6.17	156.77	6 3/4	6.75	171.45
11	7 5/8	7.63	193.68	7 7/32	7.22	183.36	6 51/64	6.80	172.64	7 3/8	7.38	187.33
12	8 1/4	8.25	209.55	7 27/32	7.84	199.23	7 27/64	7.42	188.52	8	8.00	203.20
13	8 7/8	8.88	225.43	8 15/32	8.47	215.11	8 3/64	8.05	204.39	8 5/8	8.63	219.08
14	9 1/2	9.50	241.30	9 3/32	9.09	230.98	8 43/64	8.67	220.27	9 1/4	9.25	234.95
15	10 1/8	10.13	257.18	9 23/32	9.72	246.86	9 19/64	9.30	236.14	9 7/8	9.88	250.83
16	10 3/4	10.75	273.05	10 11/32	10.34	262.73	9 59/64	9.92	252.02	10 1/2	10.50	266.70
17	11 3/8	11.38	288.93	10 31/32	10.97	278.61	10 35/64	10.55	267.89	11 1/8	11.13	282.58
18	12	12.00	304.80	11 19/32	11.59	294.48	11 11/64	11.17	283.77	11 3/4	11.75	298.45
19	12 5/8	12.63	320.68	12 7/32	12.22	310.36	11 51/64	11.80	299.64	12 3/8	12.38	314.33
20	13 1/4	13.25	336.55	12 27/32	12.84	326.23	12 27/64	12.42	315.52	13	13.00	330.20
21	13 7/8	13.88	352.43	13 15/32	13.47	342.11	13 3/64	13.05	331.39	13 5/8	13.63	346.08
22	14 1/2	14.50	368.30	14 3/32	14.09	357.98	13 43/64	13.67	347.27	14 1/4	14.25	361.95
23	15 1/8	15.13	384.18	14 23/32	14.72	373.86	14 19/64	14.30	363.14	14 7/8	14.88	377.83
24	15 3/4	15.75	400.05	15 11/32	15.34	389.73	14 59/64	14.92	379.02	15 1/2	15.50	393.70
25	16 3/8	16.38	415.93	15 31/32	15.97	405.61	15 35/64	15.55	394.89	16 1/8	16.13	409.58
26	17	17.00	431.80	16 19/32	16.59	421.48	16 11/64	16.17	410.77			
27	17 5/8	17.63	447.68	17 7/32	17.22	437.36	16 51/64	16.80	426.64			
28	18 1/4	18.25	463.55	17 27/32	17.84	453.23	17 27/64	17.42	442.52			
29	18 7/8	18.88	479.43	18 15/32	18.47	469.11	18 3/64	18.05	458.39			
30	19 1/2	19.50	495.30	19 3/32	19.09	484.98	18 43/64	18.67	474.27			
31	20 1/8	20.13	511.18	19 23/32	19.72	500.86	19 19/64	19.30	490.14			
32	20 3/4	20.75	527.05	20 11/32	20.34	516.73	19 59/64	19.92	506.02			
33	21 3/8	21.38	542.93	20 31/32	20.97	532.61	20 35/64	20.55	521.89			
34	22	22.00	558.80	21 19/32	21.59	548.48	21 11/64	21.17	537.77			
35	22 5/8	22.63	574.68	22 7/32	22.22	564.36	21 51/64	21.80	553.64			
36	23 1/4	23.25	590.55	22 27/32	22.84	580.23	22 27/64	22.42	569.52			
37	23 7/8	23.88	606.43	23 15/32	23.47	596.11	23 3/64	23.05	585.39			
38	24 1/2	24.50	622.30	24 3/32	24.09	611.98	23 43/64	23.67	601.27			
39	25 1/8	25.13	638.18	24 23/32	24.72	627.86	24 19/64	24.30	617.14			
40	25 3/4	25.75	654.05	25 11/32	25.34	643.73	24 59/64	24.92	633.02			
41	26 3/8	26.38	669.93	25 31/32	25.97	659.61	25 35/64	25.55	648.89			

NT and ZWM Terminal Blocks

DIMENSIONS

NO. OF POLES	A			B			C		
	FRACTIONS	DECIMAL	MM	FRACTIONS	DECIMAL	MM	FRACTIONS	DECIMAL	MM
42	27	27.00	685.80	26 19/32	26.59	675.48	26 11/64	26.17	664.77
43	27 5/8	27.63	701.68	27 7/32	27.22	691.36	26 51/64	26.80	680.64
44	28 1/4	28.25	717.55	27 27/32	27.84	707.23	27 27/64	27.42	696.52
45	28 7/8	28.88	733.43	28 15/32	28.47	723.11	28 3/64	28.05	712.39
46	29 1/2	29.50	749.30	29 3/32	29.09	738.98	28 43/64	28.67	728.27
47	30 1/8	30.13	765.18	29 23/32	29.72	754.86	29 19/64	29.30	744.14
48	30 3/4	30.75	781.05	30 11/32	30.34	770.73	29 59/64	29.92	760.02
49	31 3/8	31.38	796.93	30 31/32	30.97	786.61	30 35/64	30.55	775.89
50	32	32.00	812.80	31 19/32	31.59	802.48	31 11/64	31.17	791.77
51	32 5/8	32.63	828.68	32 7/32	32.22	818.36	31 51/64	31.80	807.64
52	33 1/4	33.25	844.55	32 27/32	32.84	834.23	32 27/64	32.42	823.52
53	33 7/8	33.88	860.43	33 15/32	33.47	850.11	33 3/64	33.05	839.39
54	34 1/2	34.50	876.30	34 3/32	34.09	865.98	33 43/64	33.67	855.27
55	35 1/8	35.13	892.18	34 23/32	34.72	881.86	34 19/64	34.30	871.14
56	35 3/4	35.75	908.05	35 11/32	35.34	897.73	34 59/64	34.92	887.02
57	36 3/8	36.38	923.93	35 31/32	35.97	913.61	35 35/64	35.55	902.89
58	37	37.00	939.80	36 19/32	36.59	929.48	36 11/64	36.17	918.77
59	37 5/8	37.63	955.68	37 7/32	37.22	945.36	36 51/64	36.80	934.64
60	38 1/4	38.25	971.55	37 27/32	37.84	961.23	37 27/64	37.42	950.52
61	38 7/8	38.88	987.43	38 15/32	38.47	977.11	38 3/64	38.05	966.39
62	39 1/2	39.50	1003.30	39 3/32	39.09	992.98	38 43/64	38.67	982.27
63	40 1/8	40.13	1019.18	39 23/32	39.72	1008.86	39 19/64	39.30	998.14
64	40 3/4	40.75	1035.05	40 11/32	40.34	1024.73	39 59/64	39.92	1014.02
65	41 3/8	41.38	1050.93	40 31/32	40.97	1040.61	40 35/64	40.55	1029.89
66	42	42.00	1066.80	41 19/32	41.59	1056.48	41 11/64	41.17	1045.77
67	42 5/8	42.63	1082.68	42 7/32	42.22	1072.36	41 51/64	41.80	1061.64
68	43 1/4	43.25	1098.55	42 27/32	42.84	1088.23	42 27/64	42.42	1077.52
69	43 7/8	43.88	1114.43	43 15/32	43.47	1104.11	43 3/64	43.05	1093.39
70	44 1/2	44.50	1130.30	44 3/32	44.09	1119.98	43 43/64	43.67	1109.27
71	45 1/8	45.13	1146.18	44 23/32	44.72	1135.86	44 19/64	44.30	1125.14
72	45 3/4	45.75	1162.05	45 11/32	45.34	1151.73	44 59/64	44.92	1141.02
73	46 3/8	46.38	1177.93	45 31/32	45.97	1167.61	45 35/64	45.55	1156.89

"C" dim is outside edge of block

NOTE:

To provide extra mounting support, at 26 poles one blank space is added and at 51 poles two blank spaces are added. Shorting blocks are provided with 1 extra pole for pin storage.

EXAMPLE:

If you order part number M-25028, which is a 28 pole sliding link block, you will need to use the mounting dimension for the 29 pole strip.
 If you order part number M-25052, which is a 52 pole sliding link block, you will need to use the mounting dimension for the 54 pole strip.
 If you order part number SM-25104-G, which is a 4 pole shorting block, you will need to use the mounting dimension for the 5 pole strip.

COVER PART NUMBERS

No. of Poles	Black Cover (w/cover knobs)	Clear Cover (w/cover knobs)	No. of Poles	Black Cover (w/cover knobs)	Clear Cover (w/cover knobs)	No. of Poles	Black Cover (w/cover knobs)	Clear Cover (w/cover knobs)
02	3943-2	51459-2	12	3943-12	51459-12	22	3943-22	51459-22
03	3943-3	51459-3	13	3943-13	51459-13	23	3943-23	51459-23
04	3943-4	51459-4	14	3943-14	51459-14	24	3943-24	51459-24
05	3943-5	51459-5	15	3943-15	51459-15	25	3943-25	51459-25
06	3943-6	51459-6	16	3943-16	51459-16			
07	3943-7	51459-7	17	3943-17	51459-17			
08	3943-8	51459-8	18	3943-18	51459-18			
09	3943-9	51459-9	19	3943-19	51459-19			
10	3943-10	51459-10	20	3943-20	51459-20			
11	3943-11	51459-11	21	3943-21	51459-21			

NOTE:

Cover will not fit well with certain fuse holders.

Please also refer to page 13 for more cover information.

Extra Mounting Support Guide for NT and ZWM Sliding Link & Straight Strap Terminal Blocks

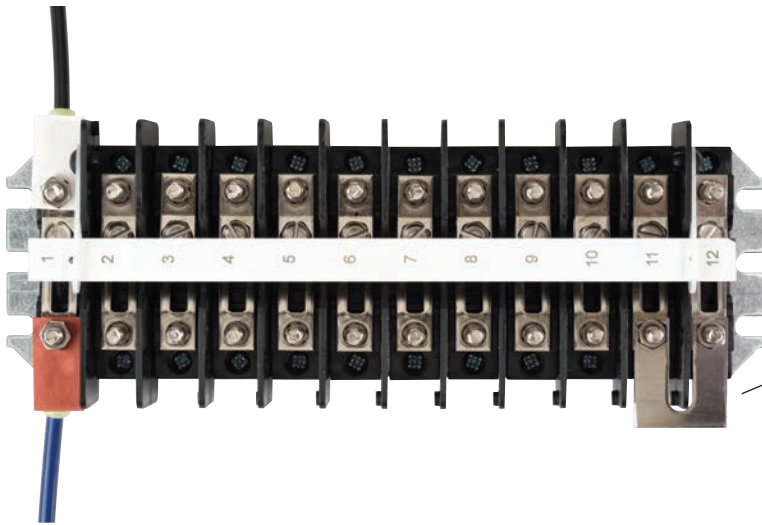
This guide can also be used for ordering replacement covers and marker strips.

Please mention the part number of the block you are adding the cover or marker strip to.

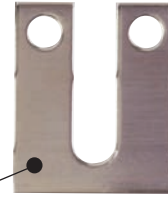
Example: Replacement marker strips or covers for a 50 pole block would require two 25 pole marker strips or covers.

No. of Poles	Pole Spacing	No. of Poles	Pole Spacing
26	13 - 13	51	17 - 17 - 17
27	14 - 13	52	17 - 18 - 17
28	14 - 14	53	18 - 17 - 18
29	15 - 14	54	18 - 18 - 18
30	15 - 15	55	18 - 19 - 18
31	16 - 15	56	19 - 18 - 19
32	16 - 16	57	19 - 19 - 19
33	17 - 16	58	19 - 20 - 19
34	17 - 17	59	20 - 19 - 20
35	18 - 17	60	20 - 20 - 20
36	18 - 18	61	20 - 21 - 20
37	19 - 18	62	21 - 20 - 21
38	19 - 19	63	21 - 21 - 21
39	20 - 19	64	21 - 22 - 21
40	20 - 20	65	22 - 21 - 22
41	21 - 20	66	22 - 22 - 22
42	21 - 21	67	22 - 23 - 22
43	22 - 21	68	23 - 22 - 23
44	22 - 22	69	23 - 23 - 23
45	23 - 22	70	23 - 24 - 23
46	23 - 23	71	24 - 23 - 24
47	24 - 23	72	24 - 24 - 24
48	24 - 24	73	24 - 25 - 24
49	25 - 24	74	25 - 24 - 25
50	25 - 25	75	25 - 25 - 25

"- " Represents location of the extra mounting support space (blank space)

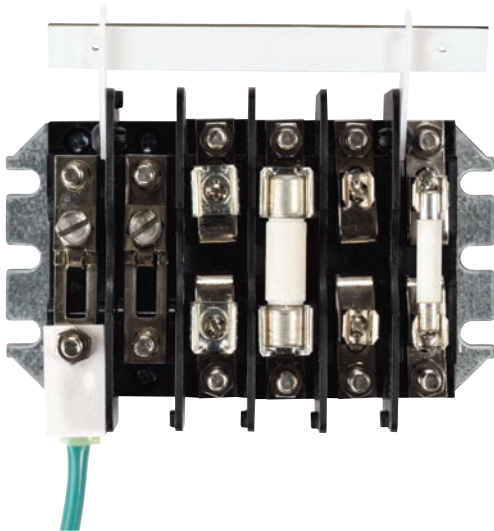


Detail



See Testing Accessories page 133 for more information regarding the Jumper Strip.

NT 12 Pole Sliding Link Block, picturing an optional engraved white marker strip and one each TBT69 (individual white marker tag) and TBT96 (individual red marker tag). Also pictured is a cut portion of the jumper strip, Part No. TBT168. This jumper strip comes in a 3ft length and can be cut down to required size by the user.



M-25006-B252 side view

M-25006-B252 NT 6 Pole Terminal Block with 2 sliding links, 2 6995 & 2 6996 fuse holders (fuses not included) and one white TBT69 marker tag shown for reference in the bottom left corner.



ZWM-25016 - ZWM 16 pole sliding link with a white marker strip (marker strip show in up position).

TERMINAL BLOCK ACCESSORIES

PART NUMBER	DESCRIPTION
14936INV	NT - Stainless Steel Sliding Link Assembly (250 series) - No Mounting Bar or Hardware
14876INV	ZWM - Everdur Bronze Sliding Link Assembly (250 series) - No Mounting Bar or Hardware
TBT21	NT Single Pole Sliding Link Assembly (14936INV) - Includes PR1422 & XNT126 - No Mounting Bar
TBT73	NT Single Pole Sliding Link Assembly (14936INV) - Includes PR1422 - No Mounting Bar
TBT133	ZWM Single Pole Sliding Link Assembly (14876INV) - Includes PR1422 & XNT126 - No Mounting Bar
TBT22	Straight Strap Assembly - Includes PR1422 & XNT126 - No Mounting Bar
TBT12	Raw Block/Base, No Assemblies or Hardware
TBT12-1	Raw Block/Base, No Assemblies - Includes PR1422
TBT34A	NT Barrier (Black)
TBT282	ZWM Barrier (Tan)
TBT168	Jumper Strip - 3ft Length - Copper, Nickel Plated (See page 133 for more jumper strip information)
6995	600V Fuse Holder Assembly - Fuse Block Only - No Mounting Bar or Hardware (FUSE NOT INCLUDED)
6996	250V Fuse Holder Assembly - Fuse Block Only - No Mounting Bar or Hardware (FUSE NOT INCLUDED)
3623	White Marker Strip, 24" Long, White Exterior w/Black Interior, Suitable for Engraving
3624	Black Marker Strip, 24" Long, Black Exterior w/White Interior, Suitable for Engraving
TBT411	Marker Arm Assembly - Includes 1 each, Nylon Marker Arm, Black Nylon Rivet and 3 Cotter Pins

REPLACE "xx" WITH THE NUMBER OF POLES REQUIRED

3623-xxKIT	White Marker Strip Cut to Requested Length w/3 Cotter Pins, 2 Nylon Marker Arms, 2 Black Nylon Rivets
3623-xx	White Marker Strip Cut to Requested Length w/3 Cotter Pins
3624-xx	Black Marker Strip Cut to Requested Length w/3 Cotter Pins
3943-xx	Black Knob Cover Assembly - Includes Cover Cut to Requested Length, 2 Cover Knobs w/Retaining Rings
51459-xx	Clear Knob Cover Assembly - Includes Cover Cut to Requested Length, 2 Cover Knobs w/Retaining Rings

Example: 3623-12 = white marker strip for a 12 pole terminal block

Note: Covers will not fit properly with certain fuse holders and shorting blocks and will have to be modified. Please mention the block part number the cover will be installed on when ordering.

THE FOLLOWING SPARE PARTS ARE SOLD IN QUANTITIES OF 100

PART NUMBER	DESCRIPTION	PART NUMBER	DESCRIPTION
TBT69-100	White Marker Tags	TBT280-100	Metal Marker Strip Arms
TBT96-100	Red Marker Tags	PR1422-100	Screw 6-32x.302 Phillips Pan Head, Steel, Zinc Plate
XNT126-100	Hex Nut 10-32 x 5/16 W x 7/64 Thick, Brass Nickel Plate	TBT94-100	Terminal Block Cover Knobs (Gray)
XNT163-100	Hex Nut 10-32 x .188TX .312W .078 Counterbore, Brass Nickel Plate	6402-100	Terminal Block Cover Knob Retaining Ring
PR1404-100	Hex Nut 10-32 x 5/16 W x 14/64 Thick, Brass Nickel Plate	XSC1139-100	Hex Screw Head(10-32 x 5/8) for Shorting Type Terminal Blocks
XP119-100	Cotter Pins for Marker Strips	10870-100	Stainless Steel Sliding Link Linking Screw (8-32) for NT Type Terminal Blocks
XR116-100	Black Nylon Rivet for Marker Strip Arms	TBT131-100	Everdur Bronze Sliding Link Linking Screw (8-32) for ZWM Type Terminal Blocks
PR411-100	Nylon Marker Strip Arms		

Please refer to our website for accessory photos.
Mounting bars are available from 1 to 73 poles, call the sales office, 1-800-325-4574, for part numbers.