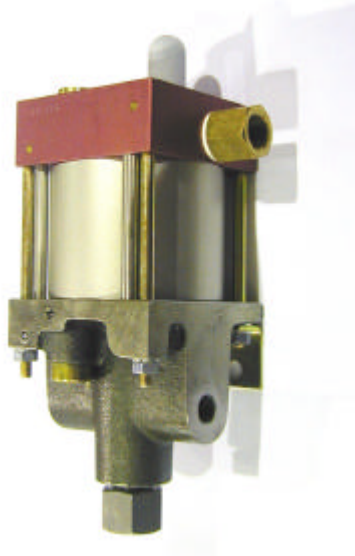


Technical Data Sheet	<b>MO72</b>	Oil service
----------------------	-------------	-------------



### Technical Data:

Air drive pressure:	1-10 bar / 14,5—145 psi
Calculated Outlet Pressure at an air drive of 10 bar/145 psi	880 bar/ 12,760 psi
Pressure ratio:	1:88
Displacement volume/double stroke	1.5 cm <sup>3</sup> / 0.09 cu.inch
<b>Connections</b>	
Inlet:	Standard: Bottom inlet 3/8 BSP
Outlet:	1/4 BSP
Air drive	3/8 BSP
Maximum operating temperature	60°C
Net weight	3.0 kg

### MO72

Single acting, single air drive head  
(Standard= Bottom inlet)

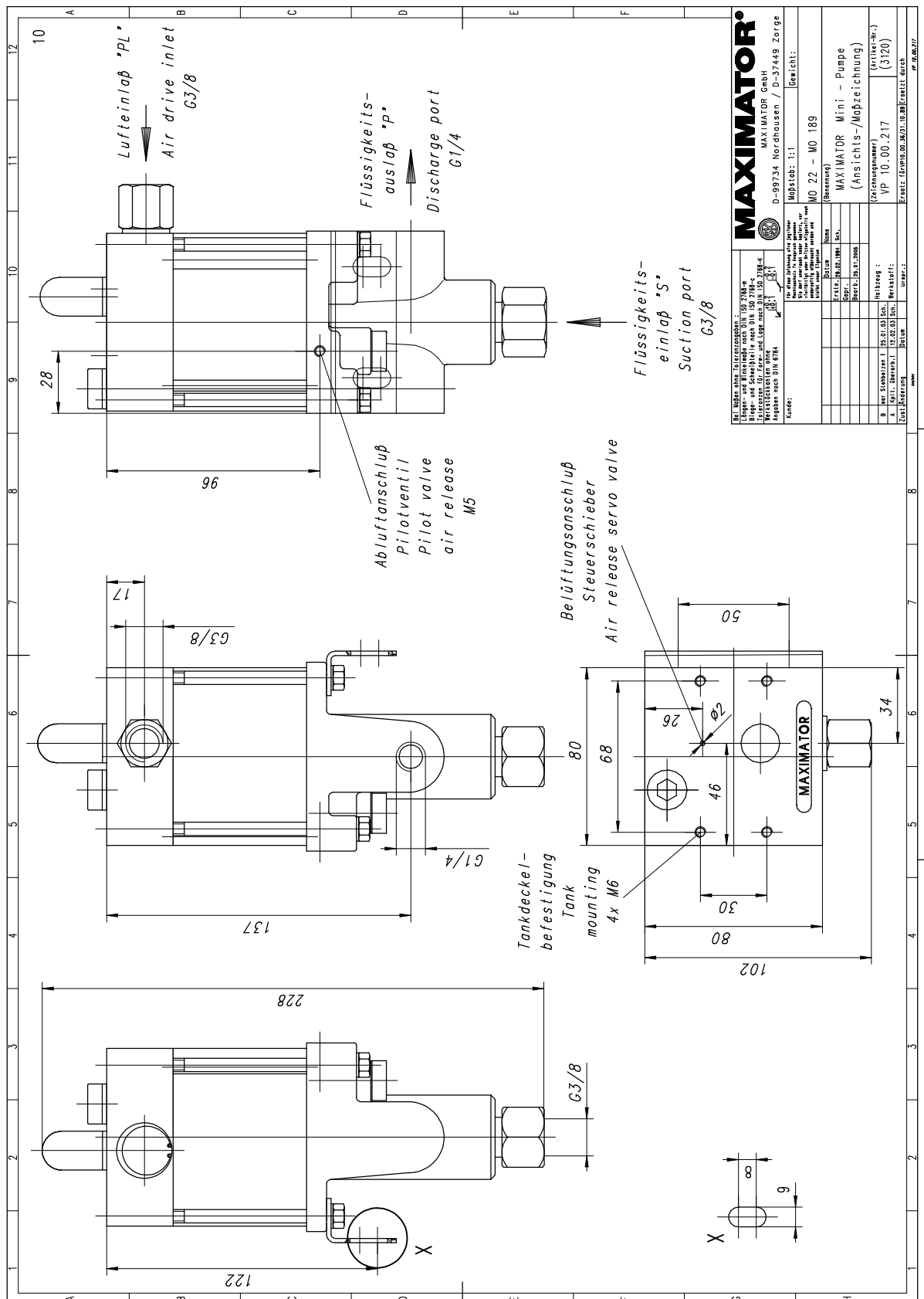
Pressure and flow performances, please see enclosed graph.

<b>Material of construction:</b>	Top cap	Aluminium
	Air cylinder	Aluminium
	seal package:	Polyurethane, Buna N
	Pump Body:	GGG50
	HP Piston	1.4112
<b>Approximate Dimensions:</b>	Height:	195 mm
	Depth:	104 mm
	Width:	112 mm
	Side inlet	MO72S
	External pilot port modification	MO72- <b>DIR</b>
	Special inlet and outlet ports, i.e. NPT	MO72- <b>NPT</b>
	Special seal material to handle special fluids on request.	
<b>Available Accessories</b>		
Air control units for M series with filter pressure regulator, control pressure gauge and shut off valve:	MO72 with <b>C1</b>	
To protect the pump against excessive outlet pressures or to limit the outlet pressure, a safety valve can be fitted to the air control unit in the air drive line:	MO72 with <b>C1/SVair</b> (The required outlet pressure has to be indicated.)	

### Please consult factory for more information.

All technical and dimensional information subject to change. All General Terms and Conditions of sale, including limitations of our liability, apply to all products and services sold.

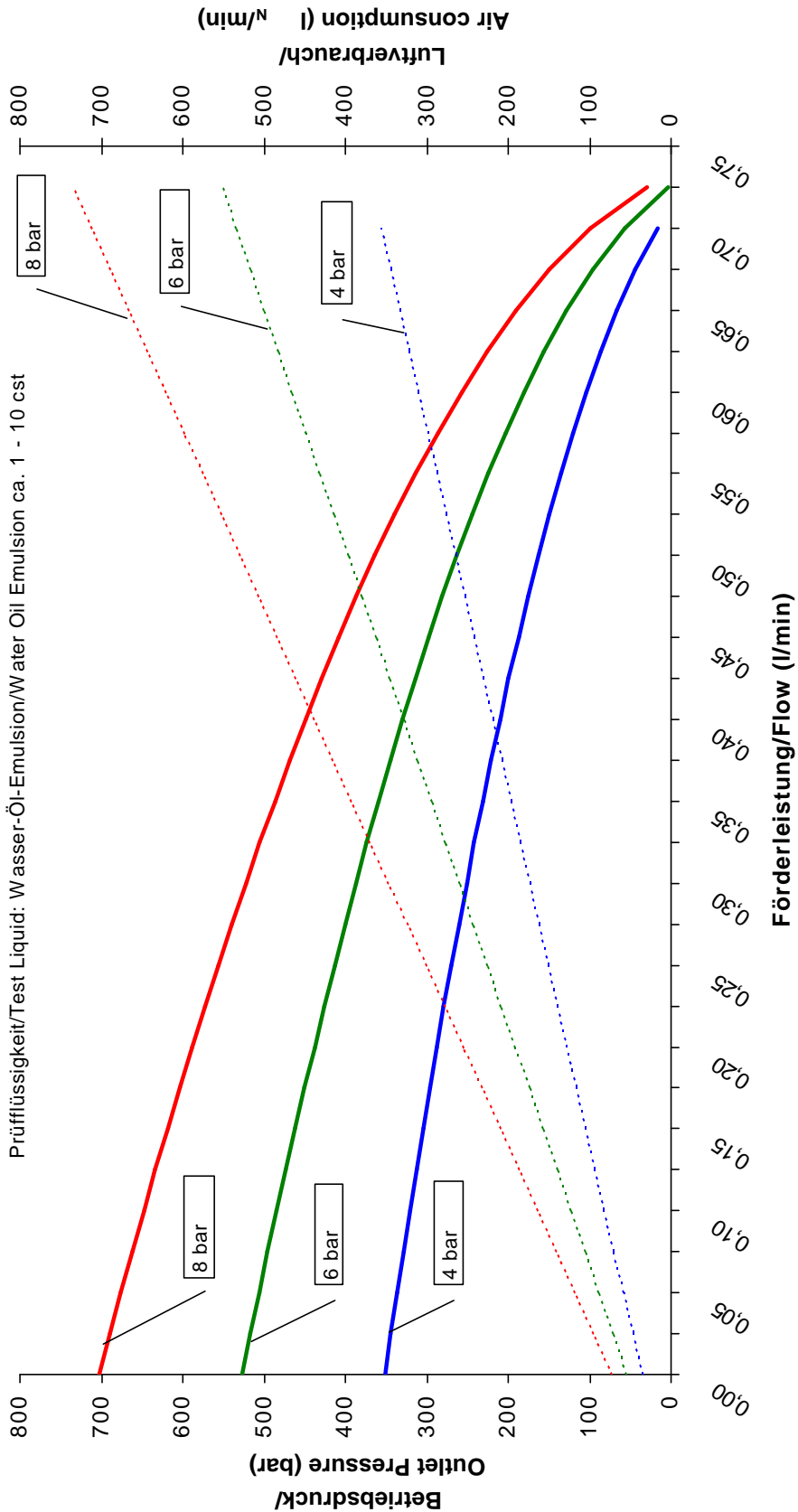
Standard pump comes with BSP ports and bottom inlet.



<b>MAXIMATOR®</b> MAXIMATOR GmbH D-99734 Nordhausen / D-37449 Zorge	
Bei allen Bauteilzeichnungen: Längen- und Winkelmaße nach DIN 780 Maßeinheiten sind in mm und Grad Angegeben sind die Maße nach DIN 780 Maßstab: 1:1	Bereich: MO 22 - MO 189 (Berechnung) MAXIMATOR Mini - Pumpe (Ansichts-/Maßzeichnung) VP 10-00-217 (3120)
Kunden: Name: Adresse: Telefon: Fax: E-Mail: Datum:	Zeichnung: Blatt: Stück: Bearb. von: Gepr. von: Gepr. am: No. vom: A. Spill. überstr. 12.00.03.01.01 Ersatz: 10.00.00.00.01.01.01

## Leistungsdiagramm/Performance Graph M(O)(SF) 72

Prüfflüssigkeit/Test Liquid: Wasser-Öl-Emulsion/Water Oil Emulsion ca. 1 - 10 cst



- Betriebsdruck bei/Outlet Pressure at 4 bar
- Betriebsdruck bei/Outlet Pressure at 6 bar
- Betriebsdruck bei/Outlet Pressure at 8 bar
- ⋯ Luftverbrauch bei/Air consumption at 4 bar
- ⋯ Luftverbrauch bei/Air consumption at 6 bar
- ⋯ Luftverbrauch bei/Air consumption at 8 bar