

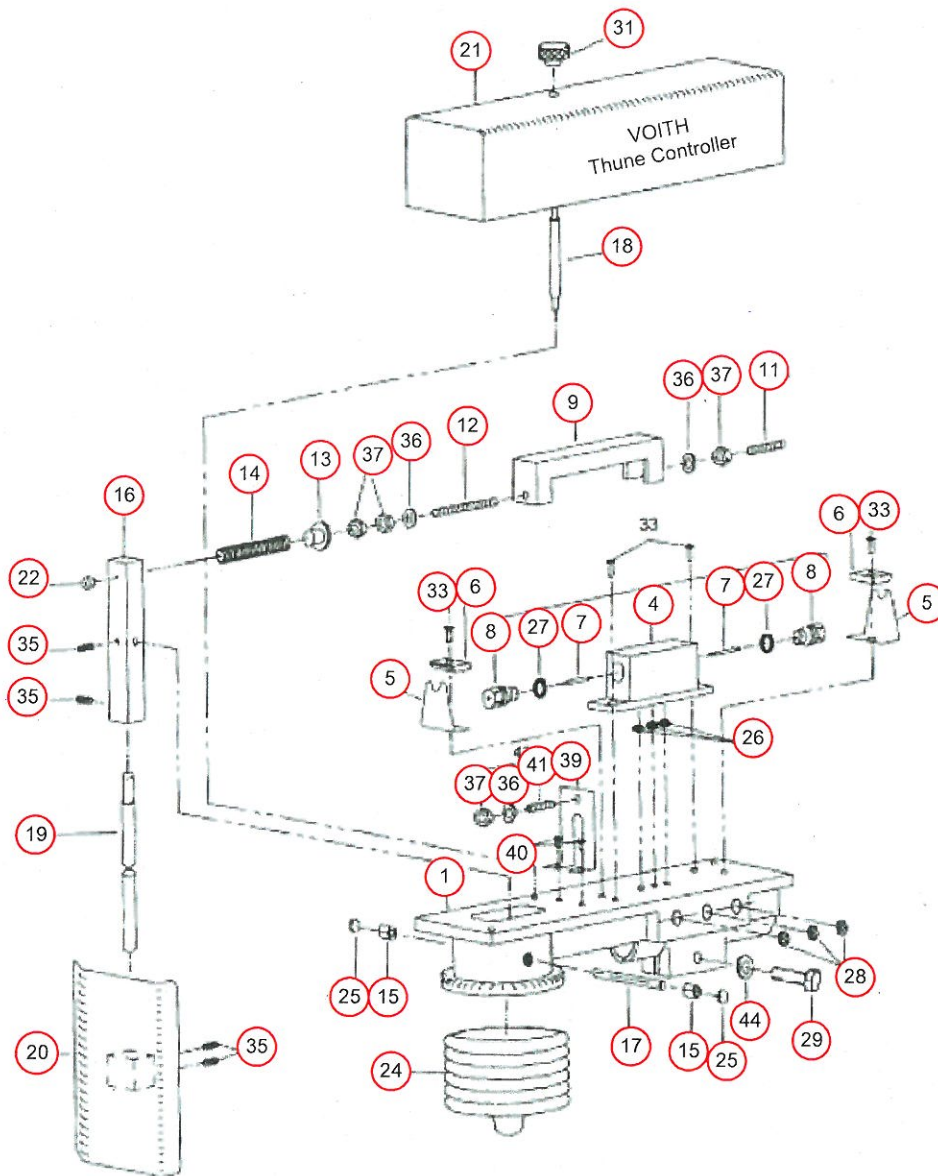
Thune Controller (S6-C7S-2V) face lift.

The Thune Controller quality has got its face lift. Thune Controller comes with chrome plated palm and Stainless steel cover as standard. New production procedures, higher tolerances and improved quality control ensures stable function and safe guiding result.

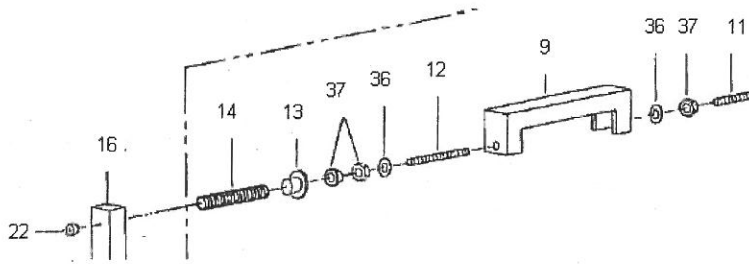
Thune Controller repair / exchange program

Send us your defect Thune Controller (S6-C7S-2V) in return you will receive a new Thune controller including chrome plated palm in return.

Thune Control Spare Part Packages

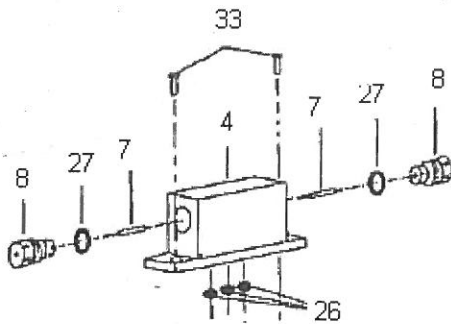


• **H2500-160 Yoke Complete**



- | | | | |
|-------------|-------|-----------------|------|
| ○ H2500-111 | 1 pc | Yoke | (9) |
| ○ H2500-114 | 1 pc | Adjusting screw | (11) |
| ○ H2500-115 | 1 pc | Adjusting screw | (12) |
| ○ H2500-116 | 1 pc | Adjusting screw | (13) |
| ○ H2500-117 | 1 pc | Tension spring | (14) |
| ○ H2500-126 | 1 pc | Sleeve | (22) |
| ○ 20018-050 | 2 pcs | Washer | (36) |
| ○ K0006-001 | 3 pcs | Nut | (37) |

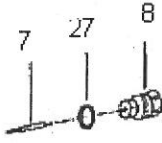
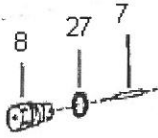
• **H2500-161 Pilot valve complete**



- | | | | |
|-------------|-------|---------------|------|
| ○ H2500-105 | 1 pc | Valve housing | (4) |
| ○ H2500-108 | 2 pcs | Needle valve | (7) |
| ○ H2500-110 | 2 pcs | Valve seat | (8) |
| ○ K0175-006 | 2 pcs | O-ring | (27) |
| ○ K0175-005 | 3 pcs | O-ring | (26) |
| ○ 20025-102 | 2 pcs | Screw | (33) |

• H2500-162

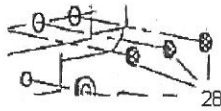
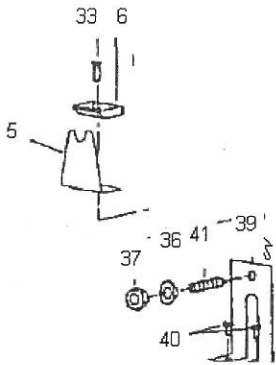
Needles complete



- | | | | |
|-------------|-------|-------------|------|
| ○ H2500-108 | 2 pcs | Needle vale | (7) |
| ○ H2500-110 | 2 pcs | Valve seat | (8) |
| ○ K0175-006 | 2 pcs | O-ring | (27) |

• H2500-163

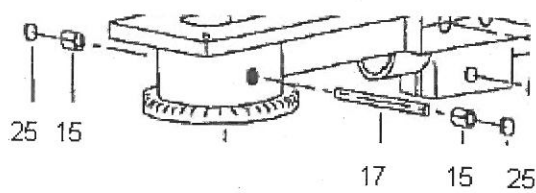
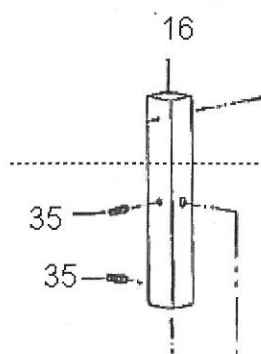
Springs complete



- | | | | |
|-------------|-------|---------------------|------|
| ○ K0006-001 | 1 pc | Nut | (37) |
| ○ 20018-050 | 1 pc | Washer | (36) |
| ○ H2500-147 | 1 pc | Adjusting screw | (41) |
| ○ H2500-145 | 1 pc | Yoke tension spring | (39) |
| ○ H2500-106 | 2 pcs | Spring | (5) |
| ○ H2500-107 | 2 pcs | Mounting block | (6) |
| ○ H2500-136 | 3 pcs | Air filter | (28) |
| ○ H2500-102 | 2 pcs | Screw | (33) |
| ○ H2500-098 | 2 pcs | Screw | (40) |

• H2500-164

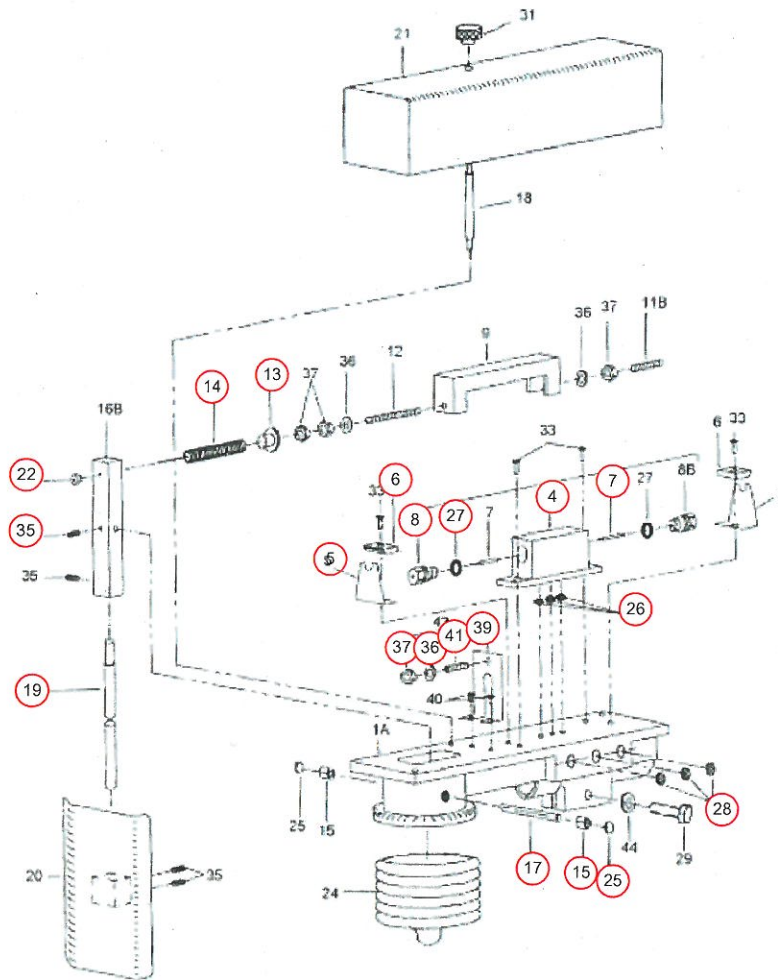
Pivot complete



○	H2500-120	1 pc	Pivot arm	(16)
○	H2500-121	1 pc	Pin shaft	(17)
○	H2500-131	2 pcs	Gasket plate	(25)
○	K0033-001	2 pcs	Bushing	(15)
○	K0008-001	2 pcs	Set screw	(35)

• H2500-165

Large spare part kit



○ H2500-161	1 pc	Pilot valve complete	(4)
○ H2500-106	2 pcs	Youke support spring	(5)
○ H2500-116	1 pc	Adjusting screw	(13)
○ H2500-117	1 pc	Return spring	(14)
○ K0033-001	2 pcs	Bushing	(15)
○ H2500-121	1 pc	Pin shaft	(17)
○ H2500-123	1 pc	Palm rod	(19)
○ H2500-126	1 pc	Sleve	(22)
○ H2500-131	2 psc	Gasket plate	(25)
○ K0175-005	6 pcs	O-ring (viton)	(26)
○ K0175-006	4 pcs	O-ring (viton)	(27)
○ H2500-136	3 pcs	Air filter	(28)
○ K0008-001	2 pcs	Set screw	(35)
○ 20018-050	2 pcs	Washer	(36)
○ K0006-001	3 pcs	Nut	(37)
○ H2500-145	1 pc	Yoke tension	(39)
○ H2500-147	1 pc	Adjusting screw	(41)
○	1 pc	Pincette	