

YUNPEN USA

YQ-A1 SERIES

1. FEATURES

- Power Entry Model filters with an IEC -Connector, double Fuse holder, Switch
- 250 Fasten terminals
- All parts are approved by **UL**, **cUL** and **VDE**



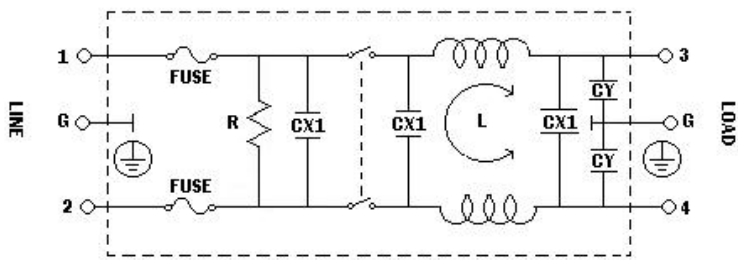
2. SPECIFICATIONS

ITEM \ MODEL		YQ01A1	YQ02A1	YQ04A1	YQ06A1
RATED VOLTAGE		250V AC	250V AC	250V AC	250V AC
RATED CURRENT		1A	2A	4A	6A
LEAKAGE CURRENT		0.45mA MAX 250V,50HZ	0.45mA MAX 250V,50HZ	0.45mA MAX 250V,50HZ	0.45mA MAX 250V,50HZ
TEST VOLTAGE	LINE TO LINE	1450V DC	1450V DC	1450V DC	1450V DC
	LINE TO GROUND	2250V DC	2250V DC	2250V DC	2250V DC
INSULATION RESISTANCE		100M ohm MIN 250VDC	100M ohm MIN 250VDC	100M ohm MIN 250VDC	100M ohm MIN 250VDC
DIRECT CURRENT RESISTANCE		0.5 ohm MAX	0.5 ohm MAX	0.2 ohm MAX	0.2 ohm MAX
TEMPERATURE RISE		30C MAX	30C MAX	30C MAX	30C MAX
OPERATING TEMPERATURE		-25 ~ +85C	-25 ~ +85C	-25 ~ +85C	-25 ~ +85C
ATTENUATION	NORMAL MODE 25dbMIN	0.50 ~ 40MHZ	0.50 ~ 40MHZ	0.60 ~ 50MHZ	0.80 ~ 50MHZ
	COMMON MODE 25dbMIN	0.10 ~ 40MHZ	0.10 ~ 40MHZ	0.10 ~ 40MHZ	0.40 ~ 50MHZ
CX		0.22uF*3	0.22uF*3	0.22uF*3	0.22uF*3
CY		2200pF*2	2200pF*2	2200pF*2	2200pF*2
INDUCTANCE		10.5mH*2	4.6mH*2	2.5mH*2	0.8mH*2

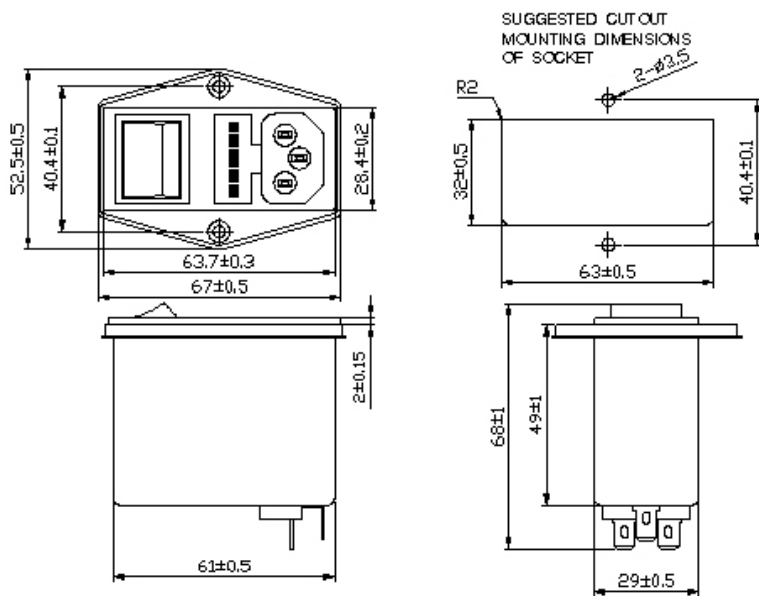
3. NOISE ATTENUATION (dB)

COMMON MODE (LINE TO GROUND) IN 50 OHM SYSTEM							
TYPE	CURRENT	FREQUENCY-MHZ					
	RATING	0.15	0.5	1.0	5.0	10.0	30.0
YQ01A1	1A	26	37	42	41	37	21
YQ02A1	2A	21	30	36	42	37	22
YQ04A1	4A	13	21	26	41	42	26
YQ06A1	6A	5	14	19	34	41	26
DIFFERENTIAL MODE (LINE TO LINE) IN 50 OHM SYSTEM							
YQ01A1	1A	7	17	24	42	39	27
YQ02A1	2A	8	18	23	43	40	27
YQ04A1	4A	5	16	21	38	41	34
YQ06A1	6A	4	13	19	31	38	31

4. CIRCUIT



5. DIMENSION (mm)



YQ-A1

● Download [yqa1.pdf](#) Specification File (112K)

Home	Product Index	Series Description	Inquiry Form	Company Profile
----------------------	-------------------------------	------------------------------------	------------------------------	---------------------------------

Copyright 2001 PROKOMA CORPORATION